

CONTACT DETAILS

Inquiry Submittal Date <input style="width: 90%;" type="text"/>	FastQuote Requested By <input style="width: 90%;" type="text"/>	Quote Returned To / Copied To <input style="width: 90%;" type="text"/>
Delivery Region <input style="width: 90%;" type="text"/>	Distributor - Specialist / Contact Info / Location <input style="width: 90%;" type="text"/>	AWC - Specialist / Contact Info / Location <input style="width: 90%;" type="text"/>
Customer Type <input style="width: 90%;" type="text"/>	OEM - Engineer / Contact Info / Location <input style="width: 90%;" type="text"/>	End User - Engineer / Contact Info / Location <input style="width: 90%;" type="text"/>
Primary Industry <input style="width: 90%;" type="text"/>		

COMMERCIAL DETAILS

Inquiry Description:

Product Need
Application Description
Competitor/Existing Solution
Customer Specified Standard AWC Solution

If Customer Specified Standard AWC Solution, please provide size, model, face, metal, and elastomer requirements and attach any supporting documentation. Input "CS" in all required fields to submit form.

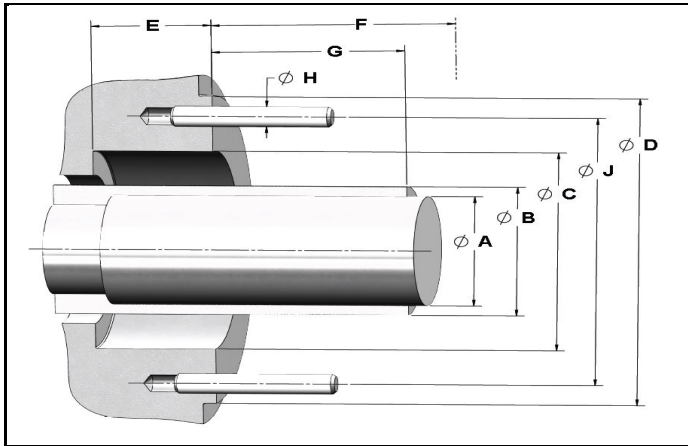
Quote/Commercial Details:

Target Seal Price:		Expected Sales Volume:	Year 1	Year 2	Year 3
Expected Seal Purchase Volume:		Expected Purchasing Method:	Purchase to Order Inventory Build Blanket Orders	Purpose:	Lower Cost Fix Reliability Issue Improve MTBF

This form can be filled using standard Adobe Acrobat Reader software (version 11.0 and above) on your computer or mobile device ([ios](#) or [Android](#)). Once required fields highlighted in red are filled, click the red **Submit Form** button at the top left of Page 1. This will open a draft outlook email. Attach supporting documentation to this email and send to initiate the FastQuotes process through CRM. Do not submit multiple forms on the same email. For additional standard pricing or fluid compatibility applications please visit sales.chesterton.com.



EQUIPMENT DETAILS



Req'd Quote/Design Date:

Req'd Product Delivery Date:

Equipment Drawings Attached?	
Yes	No

Proposal Dwg Required?	
Yes	No

Equipment 3D Models Available?	
Yes	No

Seal 3D Models Required?	
Yes	No

Tier 1

Tier 2

Tier 3

If drawing is supplied, please enter "NA" in the fields below

Equipment Dimensions			
Units	Imperial	Metric	
	Description	Value	Units
A	Shaft Diameter		
B	Sleeve Diameter		
C	Stuffing Box Bore Diameter		
D	Stuffing Box Outside Diameter		
E	Stuffing Box Depth		
F	First Obstruction Length		
G	Sleeve Extension Length		
H	Bolt Size		--
	Bolt Quantity		--
J	Bolt Circle Diameter		
K	Max. Gland OD		

Equipment Details		
Manufacturer		
Model		
Frame Size		
Seal Chamber Type		
Pump Metallurgy		
Equipment Type		
Equip. Orientation		
Shaft Rotation	CW	CCW
Elliptical Gland Required	Yes	No
Speed		RPM

Additional Equipment Comments:

Environmental Control Plan Details:

APPLICATION DETAILS

Material Requirements				
Seal Faces	Inboard		Outboard	
Metals	Wetted		Non-wetted	
O-rings	Wetted		Non-wetted	

Other Special Requirements	
Leakage condenses at ambient Leakage vaporizes at ambient Product is toxic/dangerous Product is corrosive Product hardens Product is a lubricant	Hardened shaft/sleeve Validation Testing Req'd Special/Bulk packaging Special Materials Product crystallizes For product compatibility chart please visit sales.chesterton.com
Comments:	

Application Information		
Process Fluid		
Secondary Fluid		
Primary / Secondary CAS #		
Solids		%
Specific Gravity		--
Normal Fluid Temperature		
Min/Max Fluid Temperature		
Stuffing Box Pressure		
Max. Stuffing Box Pressure		
Discharge Pressure		
Suction Pressure		
Radial Motion		
Axial Movement		
Operation		

Prioritized Features Requirements:

Documentation/Cert Requirements:

ATEX:

Yes	
No	

Atmosphere:

Gas	
Dust	

Zone Inside:

1	
2	

Zone Outside:

1	
2	

Temperature Class:

T1	450°C (842°F)	
T2	300°C (572°F)	
T3	200°C (392°F)	
T4	135°C (275°F)	
T5	100°C (212°F)	
T6	85°C (185°F)	

Chesterton Seal Recommendation

DO NOT FILL

***This Section is to be filled out by Chesterton FastQuote Seal Engineering**